

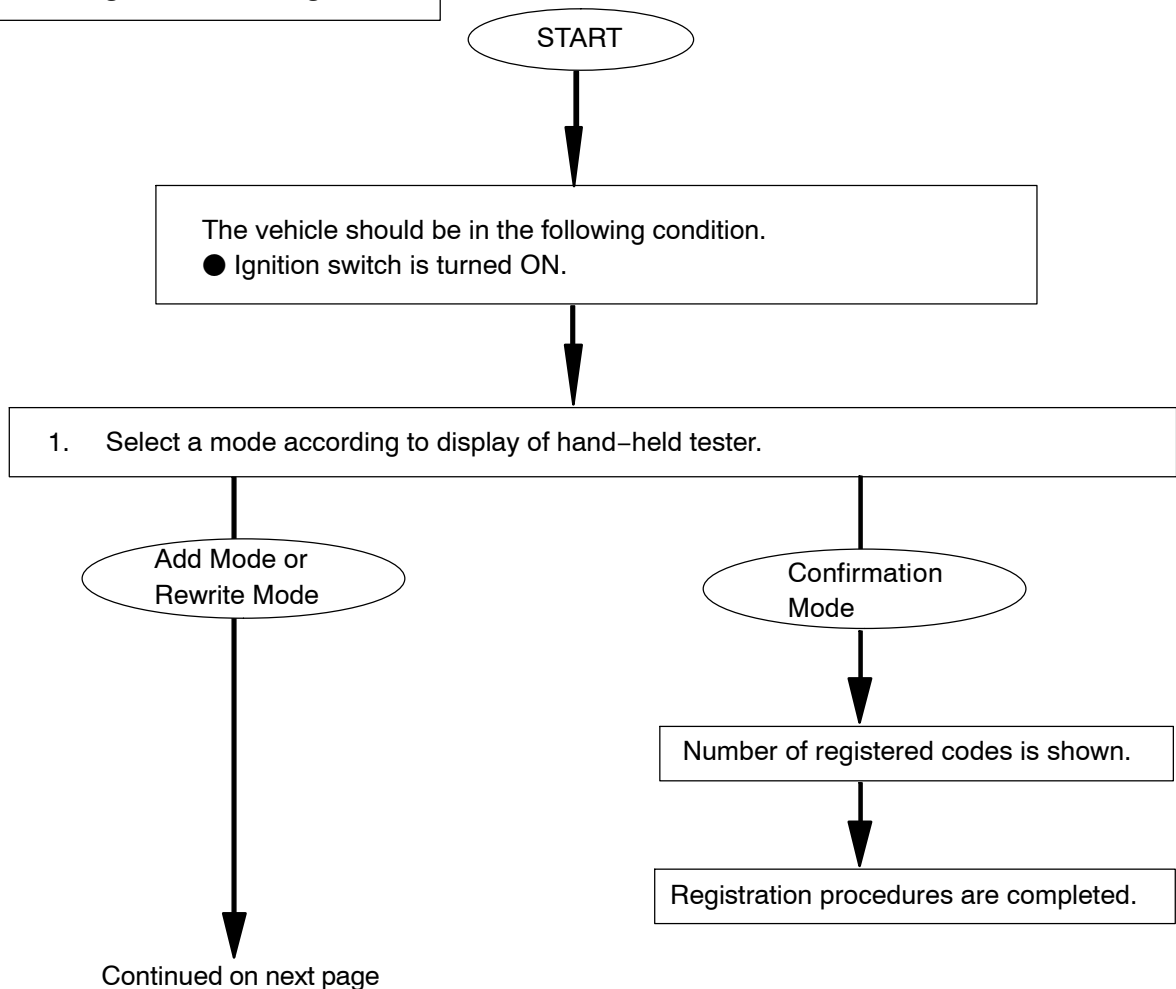
REGISTRATION

HINT:

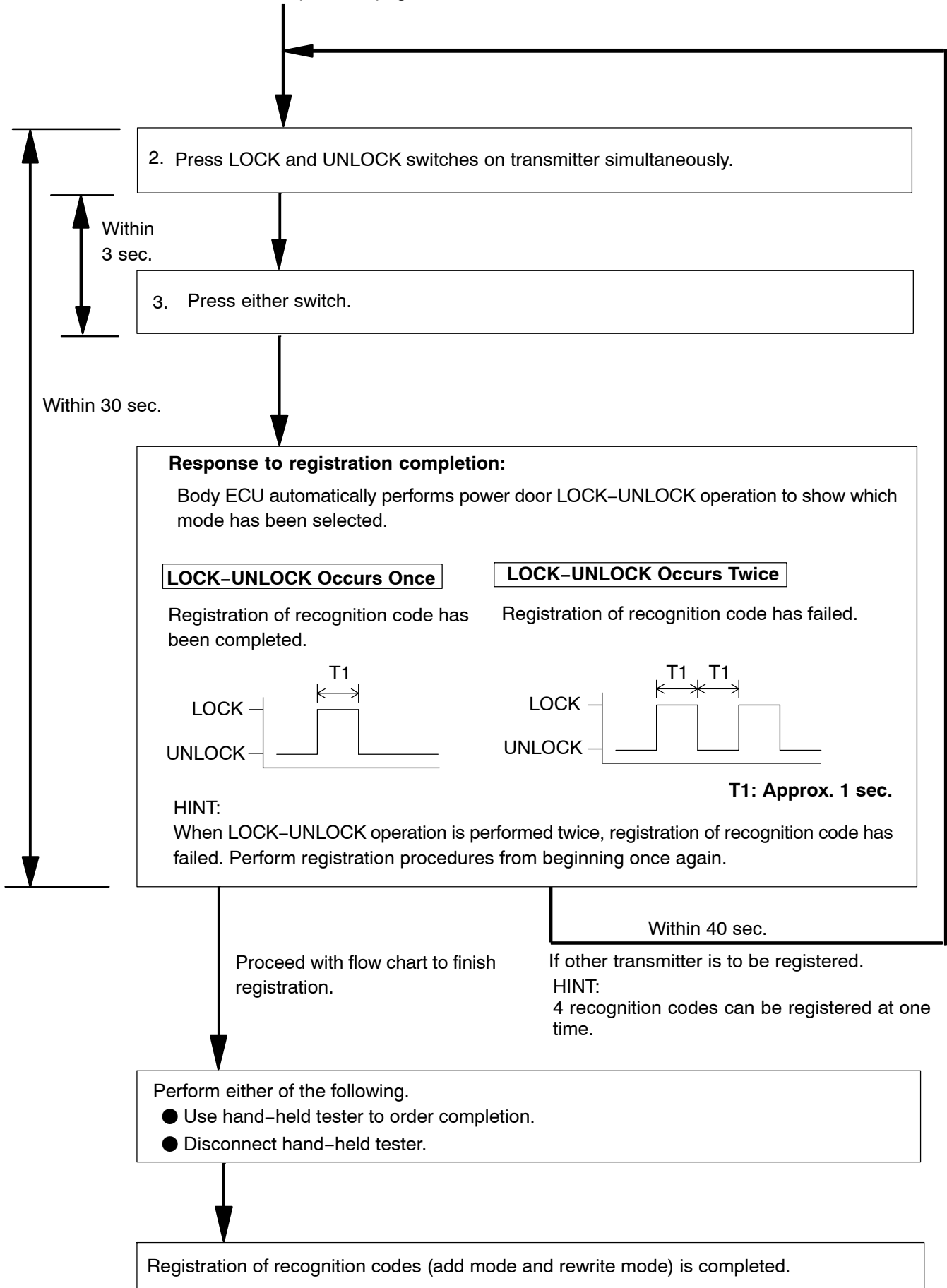
- If replacing the door control transmitter or the door control receiver, register the recognition code.
- The add mode is used to register new recognition codes while still retaining codes already registered. This mode is used when a new transmitter is added. If the number of registered codes exceeds 4, the previously registered codes will be erased in order, starting from the first registered code.
- The rewrite mode is used to erase all the previously registered recognition codes in order to register all new recognition codes. This mode is used when the transmitter or the door control receiver is exchanged for a new one.
- The confirmation mode is used to confirm how many recognition codes have already been registered before an additional registration of the recognition codes.
- The prohibition mode is used to erase all the registered codes and disables the wireless door lock function. This mode is used when the transmitter is lost.
- All the following registration procedures must be performed in order continuously.

1. REGISTER RECOGNITION CODE (using Hand-held Tester)

Flow Chart of Recognition Code Registration

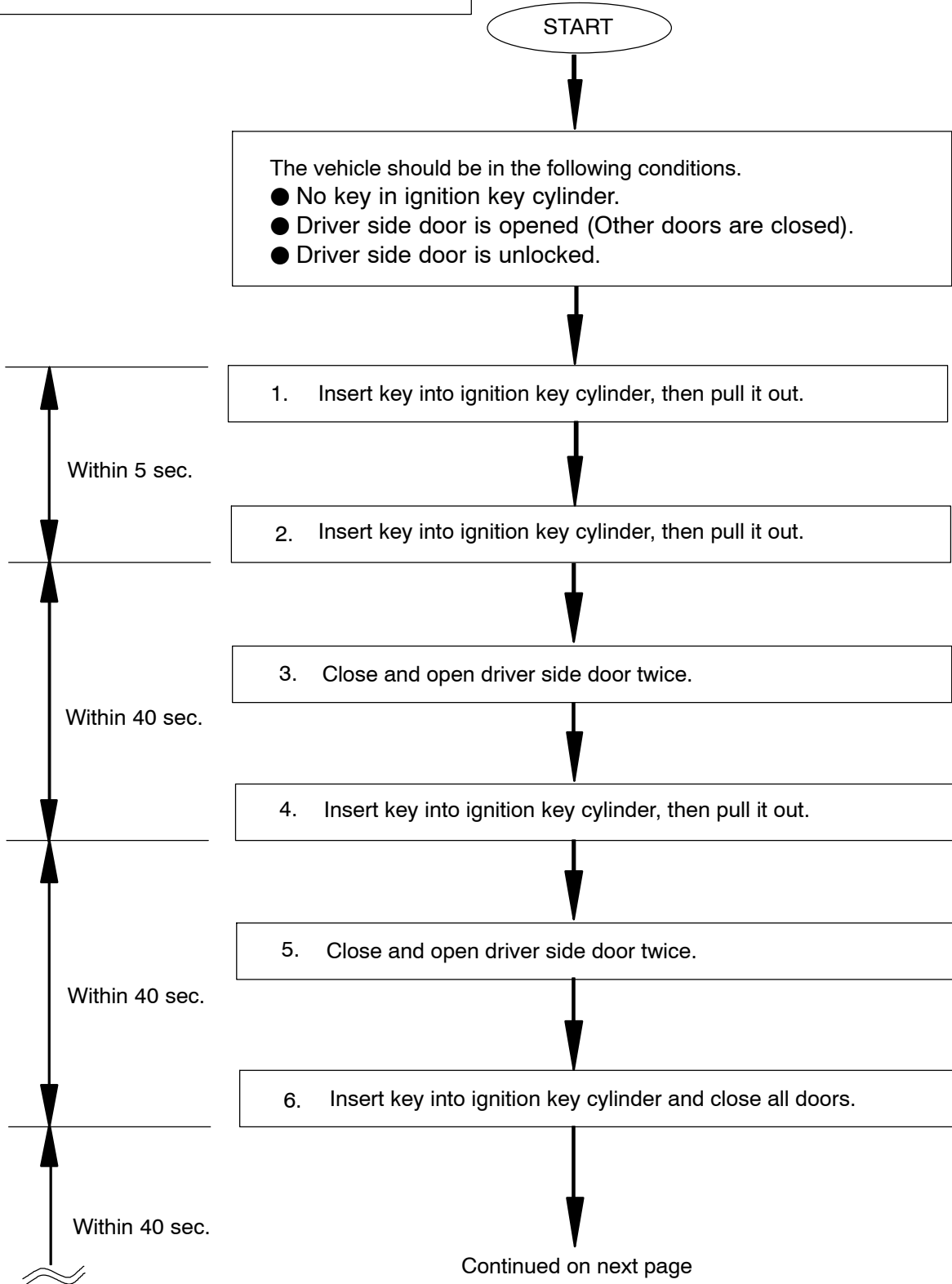


Continued from previous page



2. REGISTER RECOGNITION CODE (not Using Hand-held Tester)

Flow Chart of Recognition Code Registration



Continued from previous page

Mode Selection:

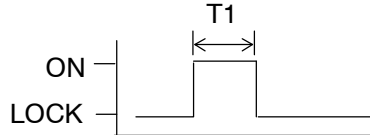
- Turn ignition switch from LOCK to ON and back to LOCK at approximately 1 second intervals according to the number of times shown below.

Number of ON-LOCK operation of ignition switch:

Add Mode

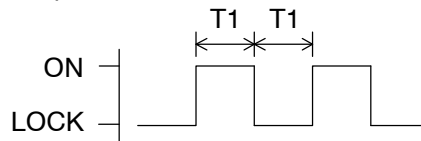
ON-LOCK operation: 1 time

T1: Approx. 1 sec.



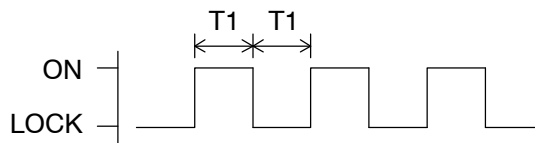
Rewrite Mode

ON-LOCK operation: 2 times



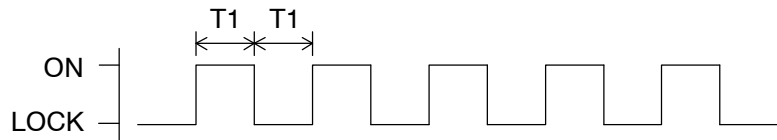
Confirmation Mode

ON-LOCK operation: 3 times



Prohibition Mode

ON-LOCK operation: 5 times



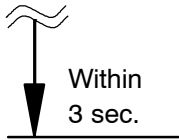
If the number of the ON-LOCK operations of the ignition switch is 0, 4 or 6 or more, there will be no response (power door lock and unlock operation) to inform which mode has been selected.

Within 40 sec.

- Remove key from ignition key cylinder.

Within 3 sec.

Continued on next page



Continued from previous page

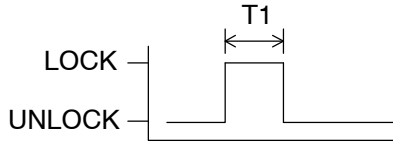


Response to selected mode (Power door lock operation):

Body ECU automatically performs power door LOCK-UNLOCK operation to inform which mode has been selected.

Add Mode

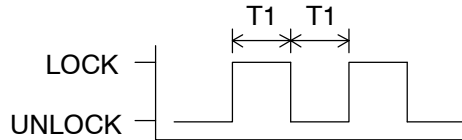
LOCK-UNLOCK operation: 1 time



T1: Approx. 1 sec.
T2: Approx. 2 sec.

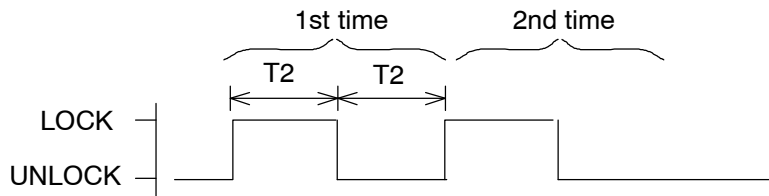
Rewrite Mode

LOCK-UNLOCK operation: 2 times



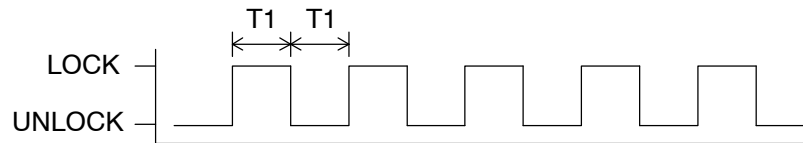
Confirmation Mode

LOCK-UNLOCK operation: The number of registered codes (1 - 5 times)



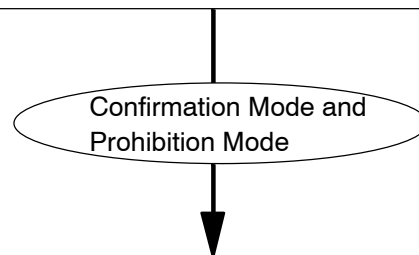
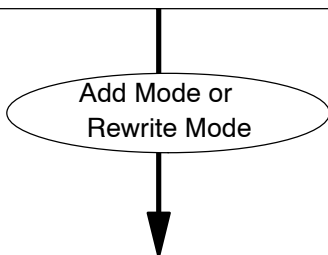
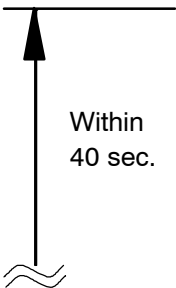
Prohibition Mode

LOCK-UNLOCK operation: 5 times



HINT:

- In the confirmation mode, when LOCK-UNLOCK operation is performed twice, the number of registered recognition codes is 2.
- In the confirmation mode, when 0 codes are registered, LOCK-UNLOCK operation is automatically performed 5 times.



Continued on next page

Registration procedures are completed.

