



Technical Service Information Bulletin

October 18, 2002

Title:

ECM CALIBRATION UPDATE: HARSH 2-3 SHIFT DURING ACCELERATION

Models:

'01 GS 300 & IS 300

ENGINE
EG005-02

Introduction Under certain driving conditions, some 2001 model year GS 300 and IS 300 vehicles equipped with an automatic transmission may exhibit a harsh 2–3 shift during acceleration with light throttle input. A revised ECM calibration file has been developed for the ECM (SAE term: Powertrain Control Module/PCM) to improve this condition.



CAUTION:

Version 9.3a or later Diagnostic Tester software is required. Using earlier versions may result in permanent ECM damage.

Applicable Vehicles

- 2001 model year **GS 300 & IS 300** vehicles equipped with automatic transmission.

Required Tools & Material

TOOLS & MATERIAL	PART NUMBER	QUANTITY
Lexus Diagnostic Tester Kit* 	01001270	1
12 Megabyte Diagnostic Tester Program Card with version 9.3a Software (or later)* 	01002593–005	1

* Essential SSTs.

NOTE: Additional Diagnostic Tester Kits, Program Cards or SSTs may be ordered by calling OTC at 1-800-933-8335.

ECM Calibration Number Information

MODEL	PREVIOUS CALIBRATION ID	NEW CALIBRATION ID
GS 300	53005000	53005200
	53005100	
IS 300	35301000	35301300
	35301100	
	35301200	

Warranty Information

OP CODE	DESCRIPTION	TIME	OFP	T1	T2
EG2003	Recalibrate ECM Engine & Transmission GS 300	0.8	89666–30130	87	99
			89666–30131		
			89666–30132		
EG2004	Recalibrate ECM Engine & Transmission IS 300	0.8	89661–53130	87	99
			89661–53131		
			89661–53132		

Applicable Warranty:**

This repair is covered under the Lexus Federal Emissions Warranty. This warranty is in effect for 96 months or 80,000 miles, whichever occurs first, from the vehicle's in-service date.

** Warranty application is limited to correction of a problem based upon a customer's specific complaint.



Parts Information

PREVIOUS PART NUMBER	NEW PART NUMBER	PART NAME
N/A	00451-00001-LBL	Authorized Modification Label

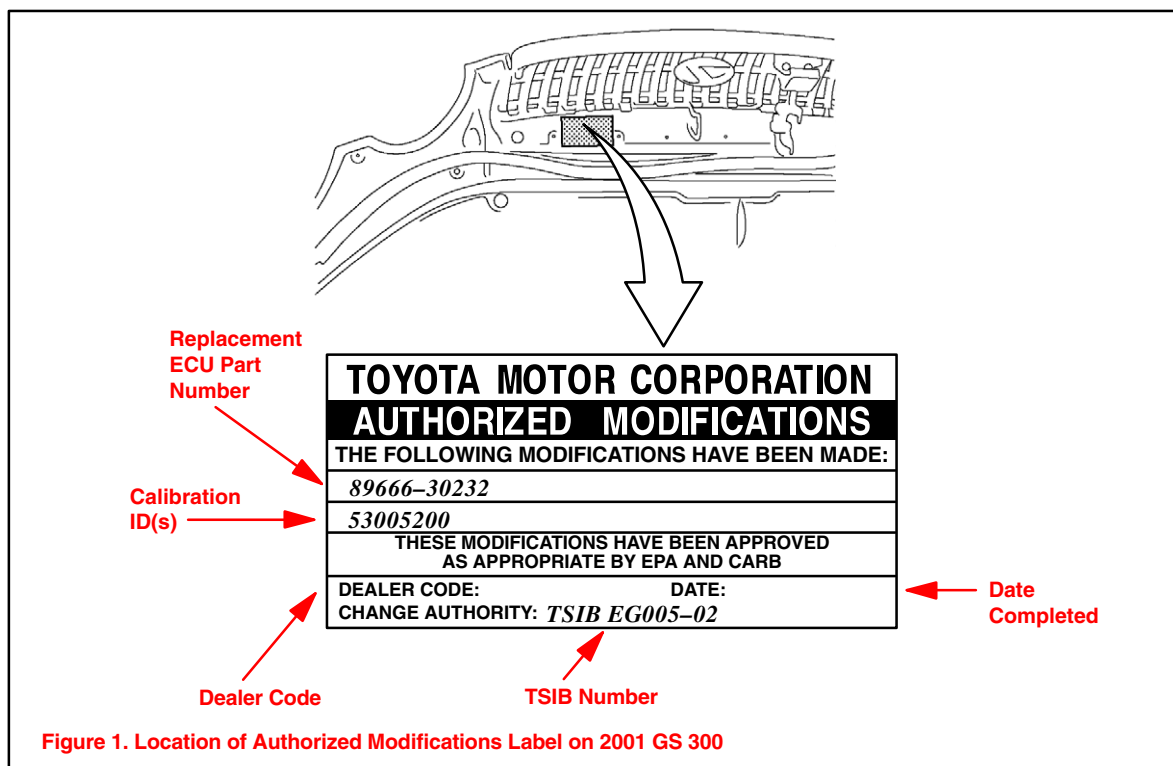
NOTE:

Authorized Modifications Labels may be ordered in packages of 25 from the Material Distribution Center (MDC) through Dealer Daily Dealer Support Material System, or by calling the MDC at 1-800-622-2033.

GS 300 Repair Procedure

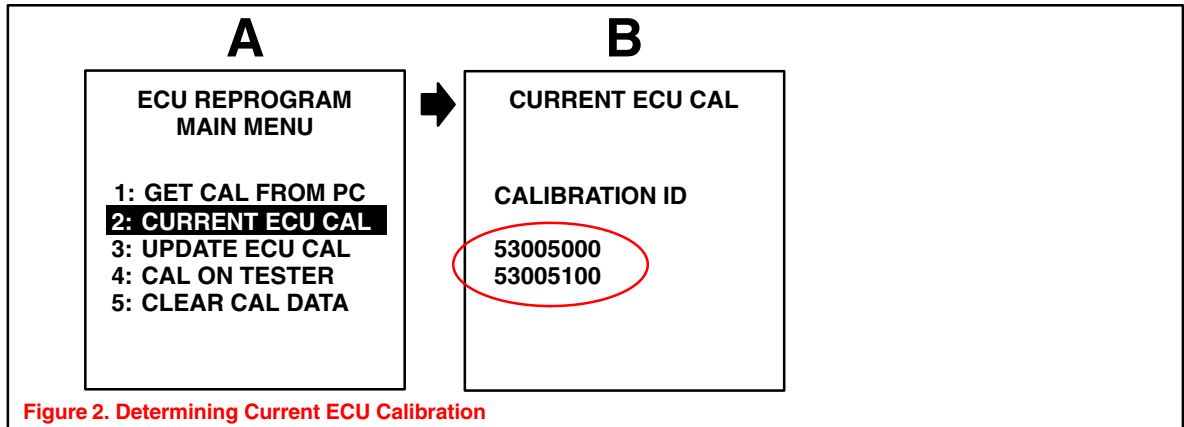
Verify Vehicle Condition (GS 300)

1. Check for the Authorized Modifications Label affixed to the vehicle in the location shown in Figure 1. Confirm if ECM (PCM) calibration has been updated. If not latest ECM (PCM) calibration – **go to step 2.**



**GS 300
Repair
Procedure
(Continued)**

2. Connect the Diagnostic Tester to the vehicle and select CURRENT ECU CAL from the ECU REPROGRAM MAIN MENU. Determine the vehicle’s current ECU calibration (see Figure 2).



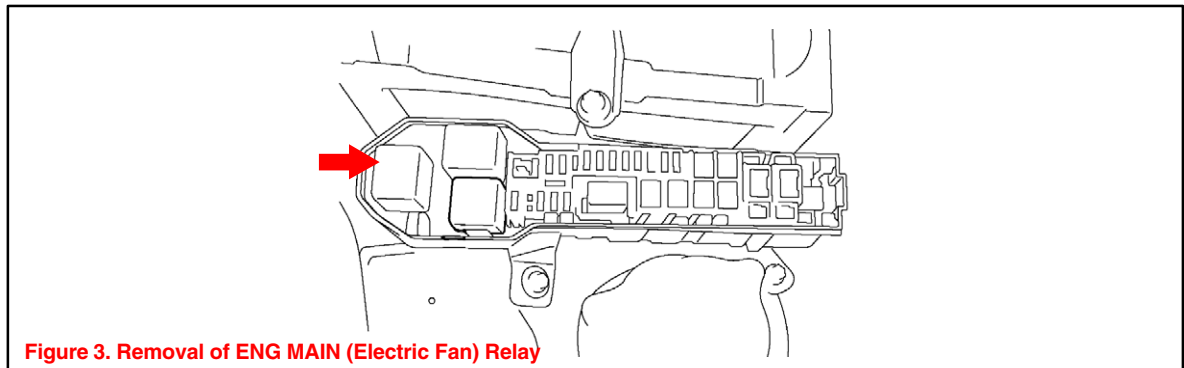
NOTE:

- If Calibration ID matches “Previous Calibration ID” as shown on page 1, proceed with flash reprogramming.
- If Calibration ID matches “New Calibration ID” as shown on page 1, this vehicle has already been reprogrammed. Refer to Repair Manual for diagnosis.

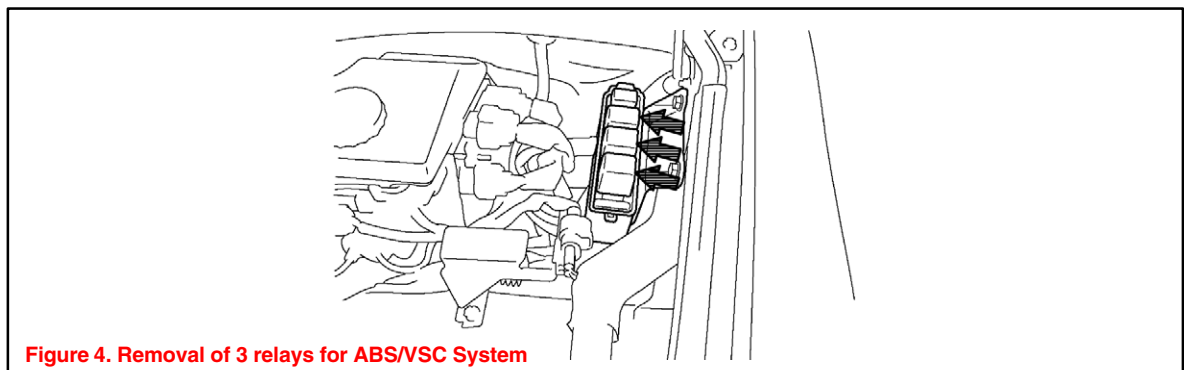
3. If ECU calibration ID is not “New Calibration ID” proceed to Flash Reprogram ECM (GS 300).

Flash Reprogram ECM (GS 300)

1. Remove the **ENG MAIN (electric fan)** relay (see Figure 3).



2. Remove the 3 relays for the ABS/VSC system (see Figure 4).



**GS 300
Repair
Procedure**
(Continued)

3. Follow the procedures outlined in TSIB SS001-01, "ECU Flash Reprogramming Process" dated March 9, 2001, and flash the ECM with new calibration file update.

CAUTION:
Version 9.3a or later diagnostic tester software is required. Using earlier versions may result in permanent ECU damage.

4. Enter the required information on the Authorized Modifications Label and affix it to the vehicle at the location shown in Figure 1 (page 2). The Authorized Modifications Label is available through the MDC, P/N 00451-00001-LBL.
5. Reinstall the **ENG MAIN (electric fan)** relay (see Figure 3).
6. Reinstall the 3 relays for ABS/VSC system (see Figure 4).
7. Use the Diagnostic Tester to delete any ABS/VSC DTCs that may have been set during this repair procedure.
8. Calibration update is complete.

**IS 300 Repair
Procedure**

Verify Vehicle Condition (IS 300)

1. Check for the Authorized Modifications Label affixed to the vehicle in the location shown in Figure 5. Confirm if ECM calibration has been updated. If not latest ECM calibration – **go to step 2.**

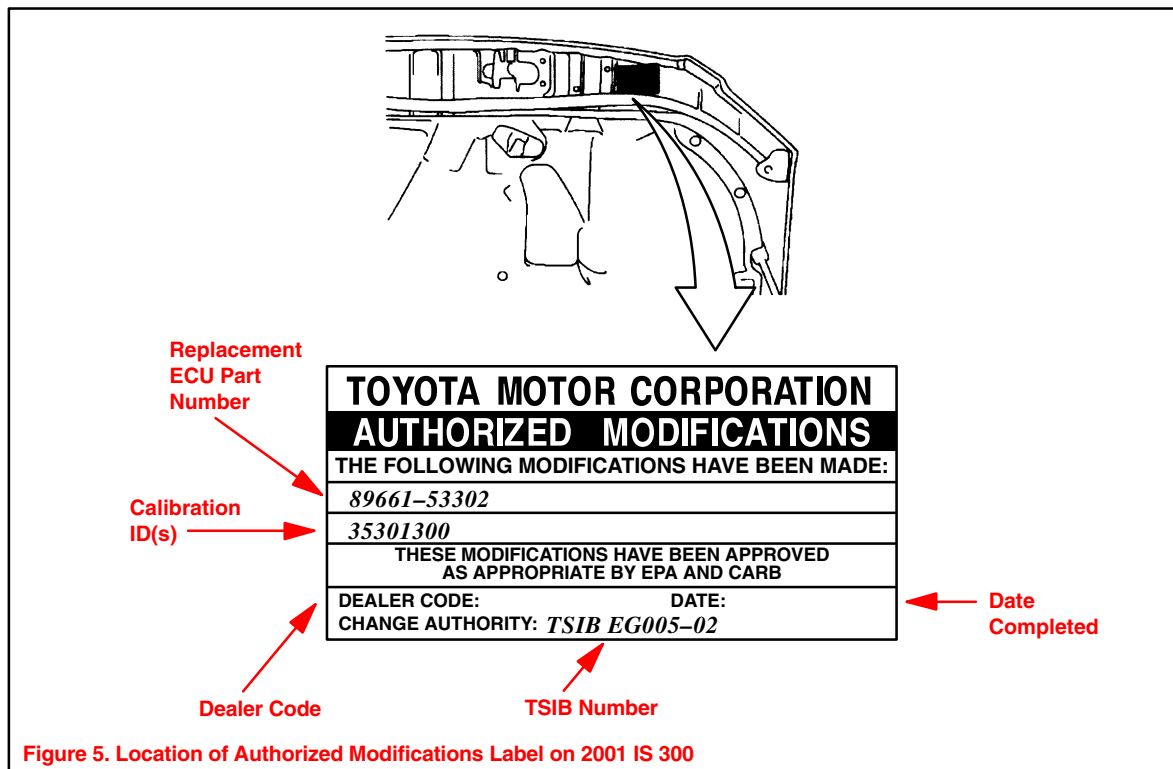


Figure 5. Location of Authorized Modifications Label on 2001 IS 300

IS 300 Repair Procedure
(Continued)

2. Connect the Diagnostic Tester to the vehicle and select CURRENT ECU CAL from the ECU REPROGRAM MAIN MENU. Determine the vehicle's current ECU calibration. (See Figure 2 on page 2.)

NOTE:

- If Calibration ID matched "Previous Calibration ID" as shown on page 1, proceed with flash reprogramming.
- If Calibration ID matched "New Calibration ID" as shown on page 1, this vehicle has already been reprogrammed. Refer to Repair Manual for diagnosis.

3. If ECU calibration ID is not "New Calibration ID" proceed to Flash Reprogram ECM (IS 300).

Flash Reprogram ECM (IS 300)

1. Disconnect the 2 connectors for the electric fans (see Figure 6).

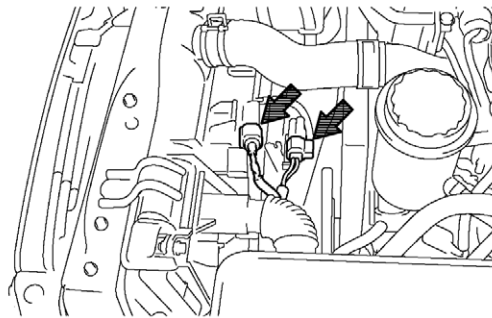


Figure 6. Disconnect the 2 Connectors for the Electric Fans

2. Follow the procedures outlined in TSIB SS001-01, "ECU Flash Reprogramming Process" dated March 9, 2001, and flash the ECM with new calibration file update.

CAUTION:

Version 9.3a or later diagnostic tester software is required. Using earlier versions may result in permanent ECU damage.

3. Enter the required information on the Authorized Modifications Label and affix it to the vehicle at the location shown in Figure 5 (page 4). The Authorized Modifications Label is available through the MDC, P/N 00451-00001-LBL.
4. Reconnect the 2 electric fan connectors disconnected in step 1 (Figure 6).
5. Calibration update is complete.