

ENGINE IMMOBILISER SYSTEM

REGISTRATION

730EO-02

1. DESCRIPTION OF CODE REGISTRATION

HINT:

The key has 2 codes: the key code (immobiliser code) and the wireless code. Both of these types need to be registered. Refer to page 73-14 for the wireless code registration procedures.

(a) When adding master keys and sub-keys (Additional registration).

(1) Register the key code (immobiliser code) in the transponder key ECU.

Target ECU	See step
Transponder key ECU	3.

(b) When replacing the transponder key ECU (New registration).

(1) Register the key code (immobiliser code) in the transponder key ECU.

Target ECU	See step
Transponder key ECU	2.

(2) Register the ECU COMMUNICATION ID between the ECM and the transponder key ECU.

Target ECU	See step
ECM	5.

(c) When replacing the ECM.

(1) Register the ECU COMMUNICATION ID between the ECM and the transponder key ECU.

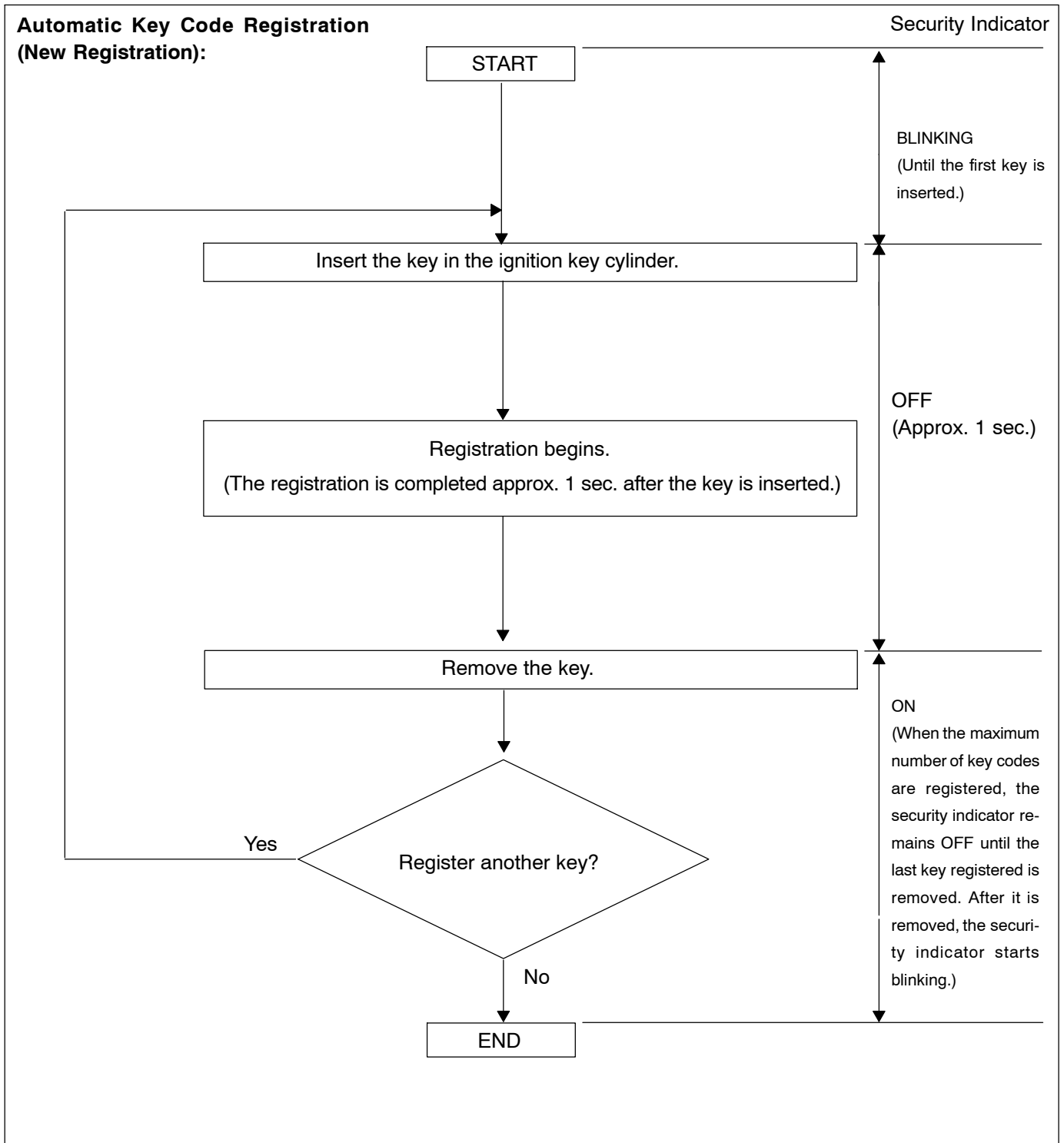
Target ECU	See step
Transponder key ECU	5.

2. KEY REGISTRATION IN AUTOMATIC REGISTRATION (NEW REGISTRATION)

(a) The new registration of the key codes (immobiliser codes) is made automatically.

HINT:

- When you install a new transponder key ECU, the key codes (immobiliser codes) must be registered.
- A new transponder key ECU starts in the automatic key code registration mode. In this mode, a maximum of 4 key codes for 3 master keys and 1 sub-key can be registered. Since the transponder key ECU can distinguish types of keys, the registration order is not specified.



3. REGISTRATION OF ADDITIONAL KEY (ADDITIONAL REGISTRATION)

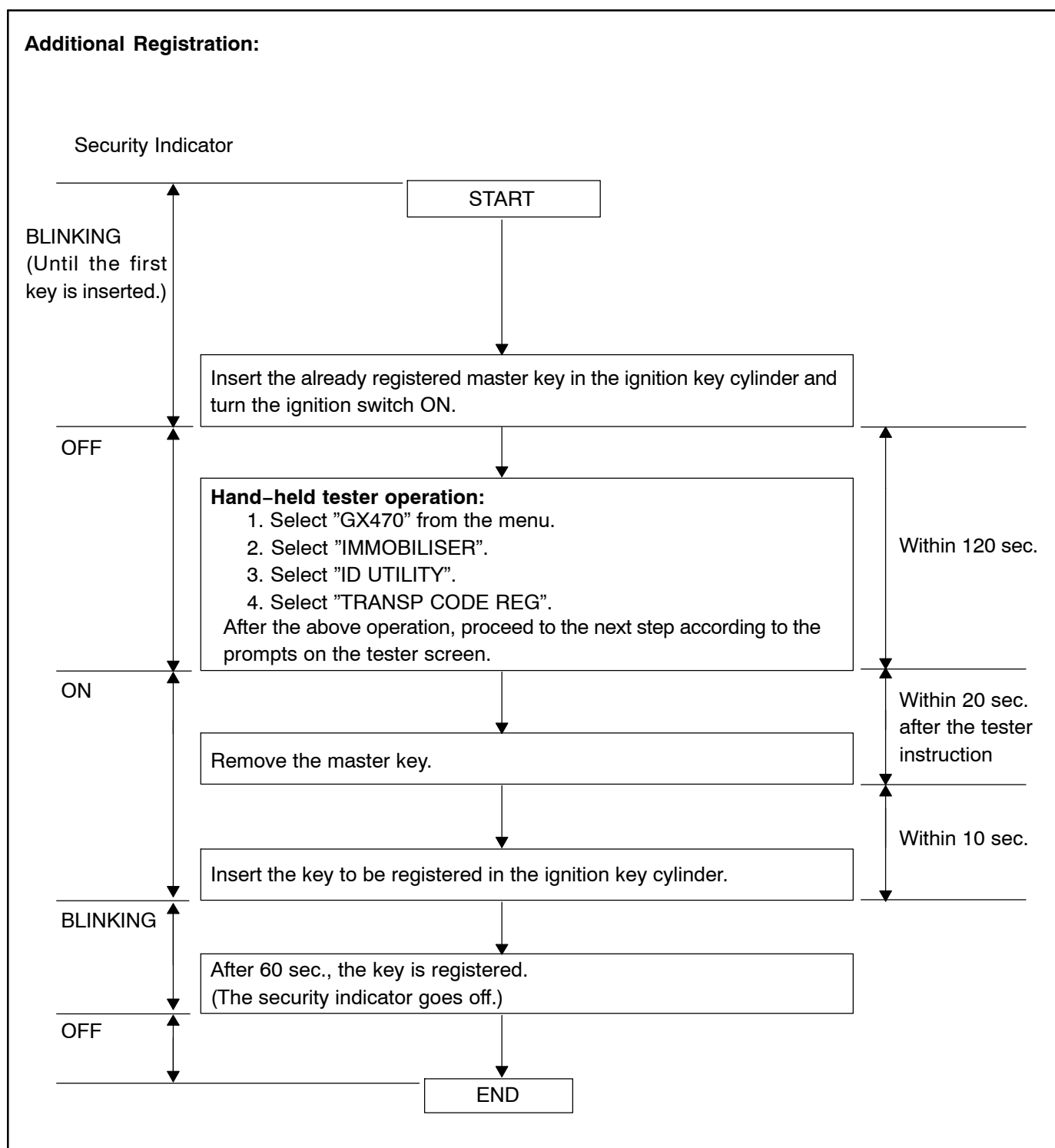
(a) Register an additional key by using the hand-held tester.

HINT:

- A maximum of 5 master key codes and 3 sub-key codes can be registered.
- Registration mode will end if each step is not completed within the specified time.
- When the ignition cylinder or the key cylinder set is replaced, remove the transmitter module from the original master key. Then install this transmitter module to a new key and use it as master key. If necessary, use this master key to register other keys.

NOTICE:

When only the ignition key cylinder has been replaced, you can lock or unlock doors by wireless operation using the new key with built-in transmitter but not by inserting it in the door key cylinder. Therefore, keep the original key for door lock/unlock operation in order to avoid troubles caused by a dead transmitter battery in the new key.

**HINT:**

- A brief outline of procedures for key code registration is shown on this page. For detailed information, please refer to the prompts on the screen of the hand-held tester.
- When the immobiliser system is operating normally and the key is pulled out, the security indicator blinks.

NOTICE:

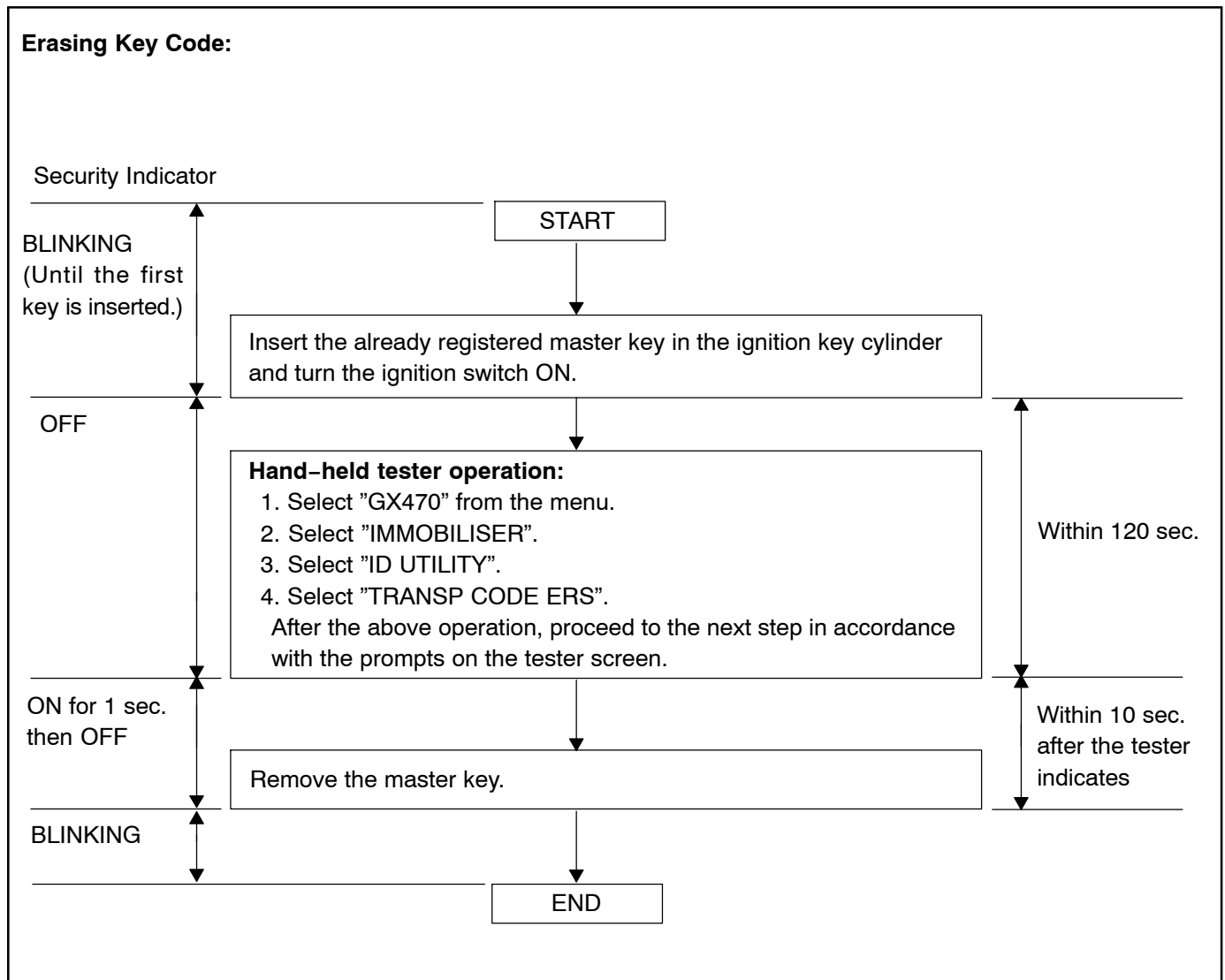
If the key code registration has failed in the automatic key code registration mode, code 2-1 will be output from the security indicator. Trying to re-register an already registered key will cause code 2-2 to be output when the key is inserted. The output details are shown in step 2 (New Registration).

4. ERASURE OF KEY CODE

(a) Erase key codes by using the hand-held tester.

HINT:

- All key codes are erased except for the master key which is used for erasing the key codes. In order to use a key for which the code has been erased, it is necessary to register the key code again.
- Registration operation will be cancelled if each step is not completed within the specified time.



HINT:

- A brief outline of procedures for key code registration is shown on this page. For detailed information, please refer to the prompts on the screen of the hand-held tester.
- When the immobiliser system is operating normally and the key is pulled out, the security indicator blinks.

5. ECU COMMUNICATION ID REGISTRATION

NOTICE:

- **The ECU communication ID should be registered when the transponder key ECU and/or the ECM is replaced, in order to match the ECM COMMUNICATION ID.**
 - **The engine cannot be started unless the ECM COMMUNICATION ID matches.**
- (a) Register the ECU communication ID.
- (1) After the transponder key ECU and/or the ECM is replaced, turn the ignition switch ON (the engine is not running).
 - (2) Short the Tc and CG terminals of the DLC3 and leave it as is for 30 minutes.
 - (3) Check that the engine starts.