

Headlamp Condensation

Service Category Vehicle Exterior

Section Lighting (ext)

Market USA

Lexus Supports
ASE Certification 

Applicability

YEAR(S)	MODEL(S)	ADDITIONAL INFORMATION
2004 – 2006	RX330	WMI(s): 2T2, JTJ
2007 – 2009	RX350	WMI(s): 2T2, JTJ
2006 – 2008	RX400H	WMI(s): JTJ

Introduction

Some 2004 – 2009 RX vehicles may exhibit a condition where excess condensation or moisture forms on the interior of the headlamp(s). To address this condition and to improve serviceability of the headlamp, an improved headlamp housing has been developed. Use the following repair information to replace the headlamp housing as necessary.

TSIB Overview

This TSIB provides details on newly available headlamp housings that can be utilized as an alternative to replacement of the entire headlamp assembly when addressing excessive headlamp condensation complaints.

Production Change Information

This TSIB applies to all 2004 – 2006 RX 330 vehicles and to RX 350 and RX 400h vehicles produced **BEFORE** the Production Change Effective VINs shown below.

MODEL	DRIVETRAIN	PLANT	PRODUCTION CHANGE EFFECTIVE VIN
RX 350	2WD	TMK	JTJGK31U#90016319
		TMMC	2T2GK31U#9C080049
	AWD	TMK	JTJHK31U#92060640
		TMMC	2T2HK31U#9C132586
RX 400h	2WD	TMK	JTJGW31U#82008611
	AWD	TMK	JTJHW31U#82062234

Headlamp Condensation

Warranty Information

OP CODE	DESCRIPTION	TIME	OFP	T1	T2
BD9065	R & R Headlamp Housing (one side) (Used when old parts are transferred to a new housing)	1.3	811##-48### 811#0-0E0##	66	48
Combo A	Opposite Side (Headlamp Housing)	1.1			

APPLICABLE WARRANTY

- This repair is covered under the Lexus Comprehensive Warranty. This warranty is in effect for 48 months or 50,000 miles, whichever occurs first, from the vehicle's in-service date.
- Warranty application is limited to occurrence of the specified condition described in this bulletin.

Parts Information

The "Unit, Headlamp" part name in the following tables refers to a housing only and is not a complete assembly.

For vehicles equipped with HID AFS headlights, ensure that you order the correct part number for the specific production date range for the vehicle being repaired.

For Japan built vehicles starting with WMI "JTJ"

MODEL	DESCRIPTION	PART NAME	VEHICLE PRODUCTION DATE	CURRENT PART NUMBER	QTY
RX 350	Non HID	Unit, Headlamp, LH	03/2005 - 08/2007	81170-48200	1
RX 400h	Non HID	Unit, Headlamp, LH	08/2007 - 12/2008	81170-48600	
RX 350	HID	Unit, Headlamp, LH	03/2005 - 08/2005	81185-48210	
RX 350	HID (w AFS) cutline	Unit, Headlamp, LH	03/2005 - 08/2005*	81185-48260	
RX 350	HID (w AFS) non cutline	Unit, Headlamp, LH	08/2005 - 08/2007*	81185-48261	
RX 400h	HID (w AFS)	Unit, Headlamp, LH	08/2007 - 12/2008	81185-48640	
RX 350	Non HID	Unit, Headlamp, RH	03/2005 - 08/2007	81130-48200	
RX 400h	Non HID	Unit, Headlamp, RH	08/2007 - 12/2008	81130-48600	
RX 350	HID	Unit, Headlamp, RH	03/2005 - 08/2005	81145-48210	
RX 350	HID (w AFS) cutline	Unit, Headlamp, RH	03/2005 - 08/2005*	81145-48260	
RX 350	HID (w AFS) non cutline	Unit, Headlamp, RH	08/2005 - 08/2007*	81145-48261	
RX 400h	HID (w AFS)	Unit, Headlamp, RH	08/2007 - 12/2008	81145-48640	

* For NAP vehicles produced through the month of 09/2005 and CBU vehicles produced through the month of 08/2005, it is necessary to remove the original headlamp, locate the original part number on the housing and compare the original part number with the new part number (for parts ordering accuracy).

Headlamp Condensation

Parts Information (Continued)

For North American built vehicles starting with WMI "2T2"

MODEL	DESCRIPTION	PART NAME	VEHICLE PRODUCTION DATE	CURRENT PART NUMBER	QTY
RX 350	Non HID	Unit, Headlamp, LH	09/2003 - 01/2009	81170-48200	1
	HID	Unit, Headlamp, LH	09/2003 - 09/2004	81185-48210	
	HID (with AFS) cutline	Unit, Headlamp, LH	09/2003 - 09/2005*	81185-48260	
	HID (with AFS) non cutline	Unit, Headlamp, LH	09/2005 - 01/2009*	81185-48261	
	Non HID	Unit, Headlamp, RH	09/2003 - 01/2009	81130-48200	
	HID	Unit, Headlamp, RH	09/2003 - 09/2004	81145-48210	
	HID (with AFS) cutline	Unit, Headlamp, RH	09/2003 - 09/2005*	81145-48260	
	HID (with AFS) non cutline	Unit, Headlamp, RH	09/2005 - 01/2009*	81145-48261	

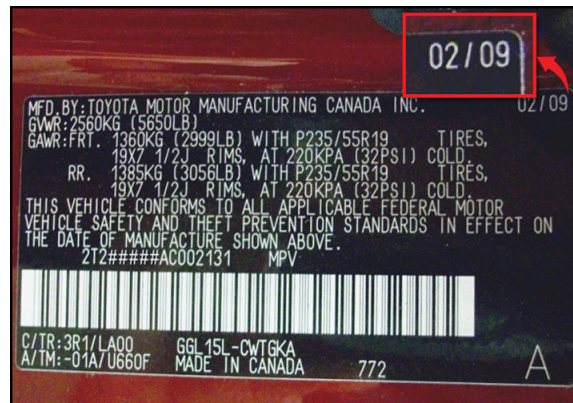
* For NAP vehicles produced through the month of 09/2005 and CBU vehicles produced through the month of 08/2005, it is necessary to remove the original headlamp, locate the original part number on the housing and compare the original part number with the new part number (for parts ordering accuracy).

Headlamp Condensation

Parts Information (Continued)

NOTE

- AFS (Adaptive Front Lighting System) refers to an automatic lamp orientation control system that takes into account both steering angle and vehicle speed to orient the headlamps to an angle that provides better nighttime visibility.
- HID (High Intensity Discharge) headlamp refers a specific type of headlamp bulb that is generally brighter than conventional headlamp bulbs.
- Certain vehicles equipped with HID AFS headlights have a distinct beam pattern or “cutline.” It is important that you order the correct part number for the specific production date of the vehicle being repaired.
- Production date can be verified by inspecting the Manufacturing Label located on the driver’s side “B” pillar.



Headlamp Condensation

Repair Procedure

Remove and replace the headlamp housing or assembly. Refer to the Technical Information System (TIS), applicable model year Repair Manual:

- 2004 RX 330:
Vehicle Exterior – Lighting: “LH Headlight Assembly: [Overhaul](#)”
- 2005 RX 330:
Vehicle Exterior – Lighting: “LH Headlight Assembly: [Overhaul](#)”
- 2006 RX 330:
Vehicle Exterior – Lighting: “Headlight Assembly: [Removal](#) / [Disassembly](#) / [Resassembly](#) / [Installation](#)”
- 2007 RX 350:
Vehicle Exterior – Lighting: “Headlight Assembly: [Removal](#) / [Disassembly](#) / [Resassembly](#) / [Installation](#)”
- 2008 RX 350:
Vehicle Exterior – Lighting: “Headlight Assembly: [Removal](#) / [Disassembly](#) / [Resassembly](#) / [Installation](#)”
- 2009 RX 350:
Vehicle Exterior – Lighting: “Headlight Assembly: [Removal](#) / [Disassembly](#) / [Resassembly](#) / [Installation](#)”
- 2006 RX 400h:
Vehicle Exterior – Lighting: “Headlight Assembly: [Removal](#) / [Disassembly](#) / [Resassembly](#) / [Installation](#)”
- 2007 RX 400h:
Vehicle Exterior – Lighting: “Headlight Assembly: [Removal](#) / [Disassembly](#) / [Resassembly](#) / [Installation](#)”
- 2008 RX 400h:
Vehicle Exterior – Lighting: “Headlight Assembly: [Removal](#) / [Disassembly](#) / [Resassembly](#) / [Installation](#)”